

# Attentional saliency in images

Instructions given to students

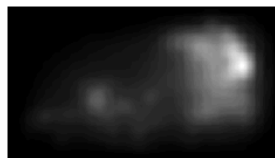
## Sample results

The algorithm identifies image regions that stand out based on several basic visual features, including color, intensity and edge orientation.

original image



Itti-Koch saliency map



marked image



saliency map overlaid



most salient (95%ile) parts

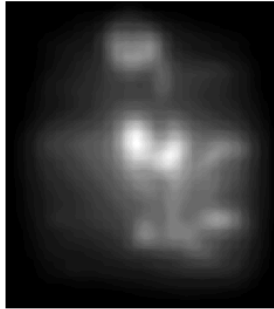


It sometimes appears that the algorithm is picking out complex objects that are similar to what humans ultimately notice ...

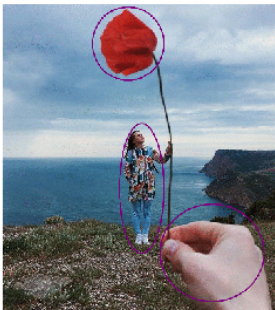
**original image**



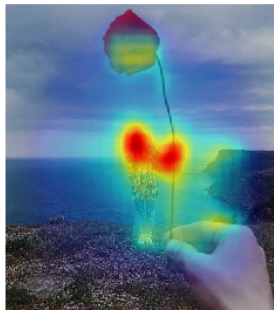
**Itti-Koch saliency map**



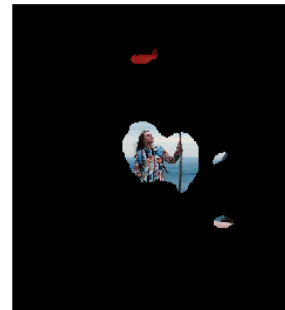
**marked image**



**saliency map overlaid**



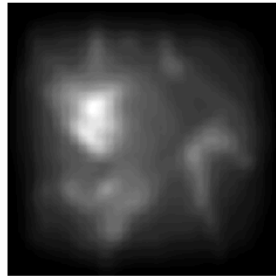
**most salient (95%ile) parts**



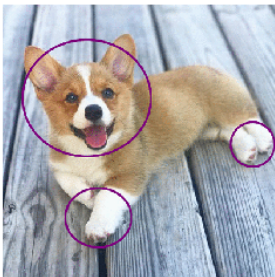
**original image**



**Itti-Koch saliency map**



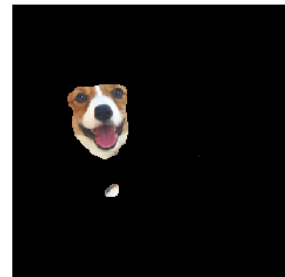
**marked image**



**saliency map overlaid**



**most salient (95%ile) parts**



**original image**



**Itti-Koch saliency map**



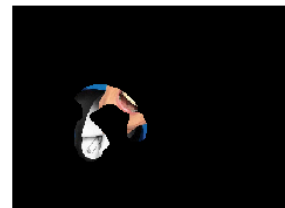
**marked image**



**saliency map overlaid**



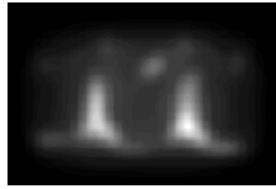
**most salient (95%ile) parts**



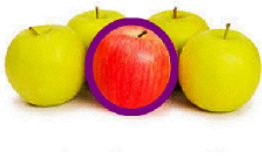
original image



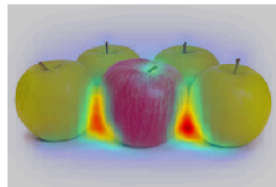
Itti-Koch saliency map



marked image



saliency map overlaid



most salient (95%ile) parts



From:

<https://www.wiki.anthonycate.org/> - Visual Cognitive Neuroscience

Permanent link:

[https://www.wiki.anthonycate.org/doku.php?id=teaching:saliency:saliency\\_assignment&rev=1569099713](https://www.wiki.anthonycate.org/doku.php?id=teaching:saliency:saliency_assignment&rev=1569099713)

Last update: 2019/09/21 17:01

