

Attentional saliency in images

Instructions given to students

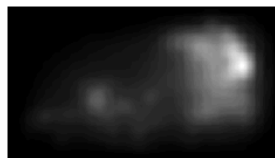
Sample results

The algorithm identifies image regions that stand out based on several basic visual features, including color, intensity and edge orientation.

original image



Itti-Koch saliency map



marked image



saliency map overlaid



most salient (95%ile) parts

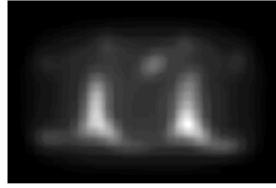


It sometimes appears that the algorithm is picking out complex objects that are similar to what humans ultimately notice ...

original image



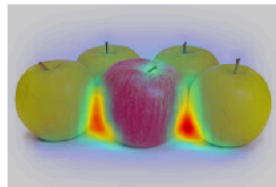
Itti-Koch saliency map



marked image



saliency map overlaid



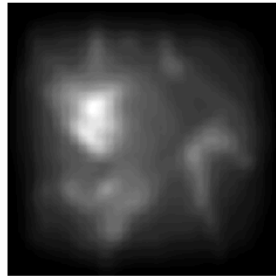
most salient (95%ile) parts



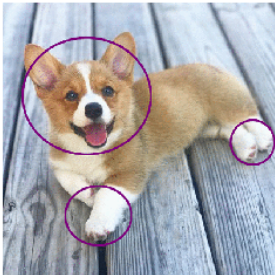
original image



Itti-Koch saliency map



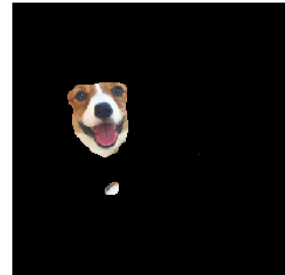
marked image



saliency map overlaid



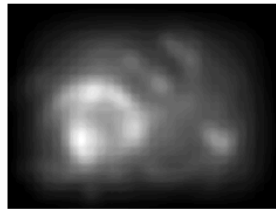
most salient (95%ile) parts



original image



Itti-Koch saliency map



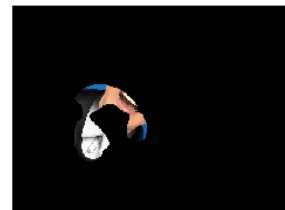
marked image



saliency map overlaid



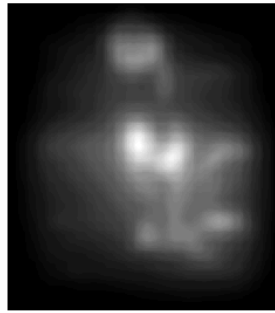
most salient (95%ile) parts



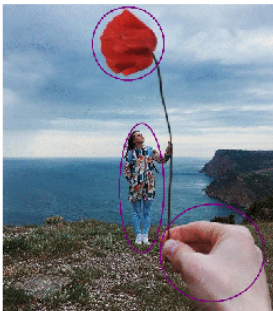
original image



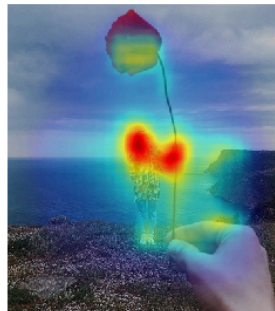
Itti-Koch saliency map



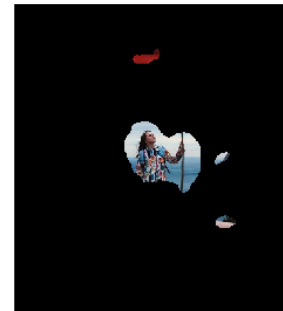
marked image



saliency map overlaid



most salient (95%ile) parts



From:

<https://www.wiki.anthonycate.org/> - Visual Cognitive Neuroscience

Permanent link:

https://www.wiki.anthonycate.org/doku.php?id=teaching:saliency:saliency_assignment&rev=1569099662

Last update: 2019/09/21 17:01

